

TITLE: “solitary keratotic papule on shin hidraacanthoma simplex mimicking Bowens disease and angiokeratoma”

AUTHORS: DR. SHREYA MANIYAR , DR. VISHALAKSHI VISHWANATH

AFFILIATION: DISHA SKIN AND LASER INSTITUTE, THANE

Introduction

- ◉ Solitary keratotic lesions in elderly patients often present a diagnostic dilemma due to their resemblance to both benign (seborrheic keratosis, angiokeratoma) and malignant lesions (Bowen’s disease, squamous cell carcinoma in situ).
- ◉ Hidraacanthoma simplex is a rare, benign adnexal tumor of eccrine poroid differentiation that arises within the epidermis.
- ◉ Awareness of this entity helps avoid unnecessary wide excisions or aggressive interventions.

Case Report

- ◉ A 63-year-old female presented with an asymptomatic solitary raised lesion over the right shin persisting for five months. (Fig. 1)
- ◉ On examination, a solitary keratotic papule measuring 0.8×0.8 mm was noted.
- ◉ Dermoscopic evaluation revealed well defined homogeneous red-brown globules with whitish keratotic edge.
- ◉ Clinical differential diagnoses considered were seborrheic keratosis, Bowen’s disease, and angiokeratoma.
- ◉ A 3 mm punch biopsy was performed to confirm the diagnosis.

Results

- ◉ Histopath- Mild reticulated epidermal hyperplasia with well-circumscribed nests of poroid cells within the acanthotic epidermis , with no evidence of cytological atypia or vascular dilatation. (Fig. 3)
- ◉ Diagnosis: Hidraacanthoma simplex - A rare benign adnexal tumour of poroid differentiation.

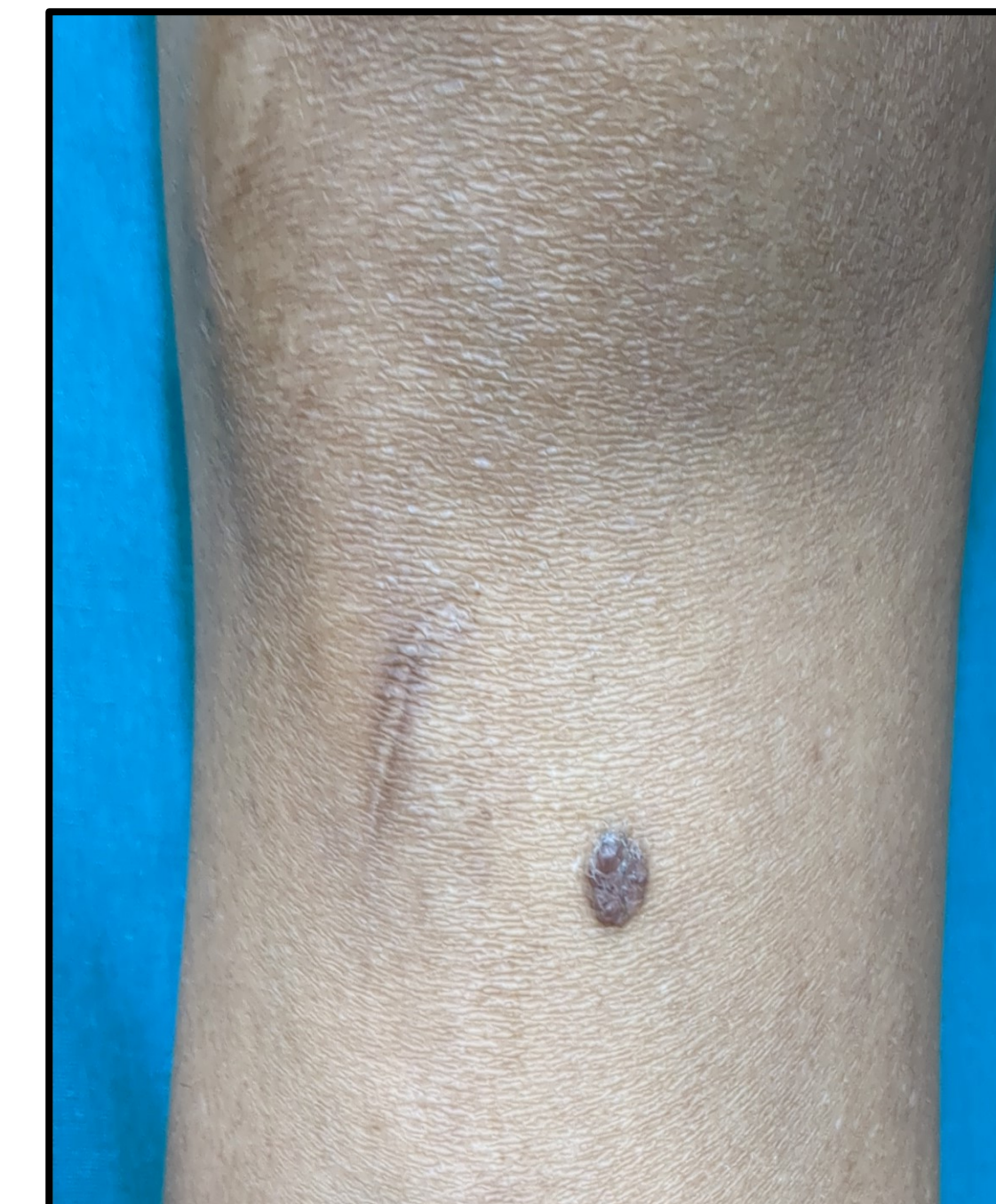


Fig. 1

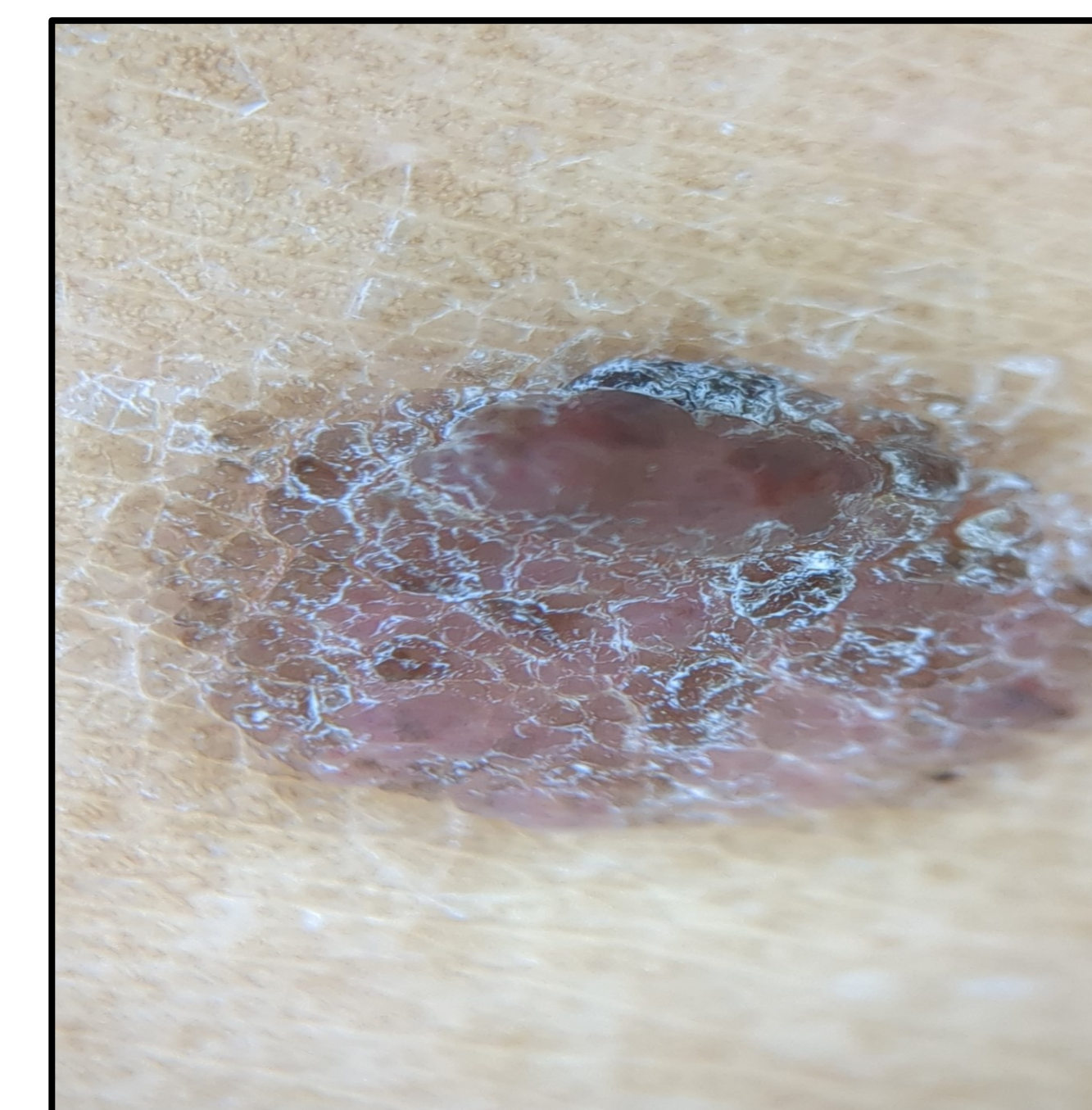


Fig. 2

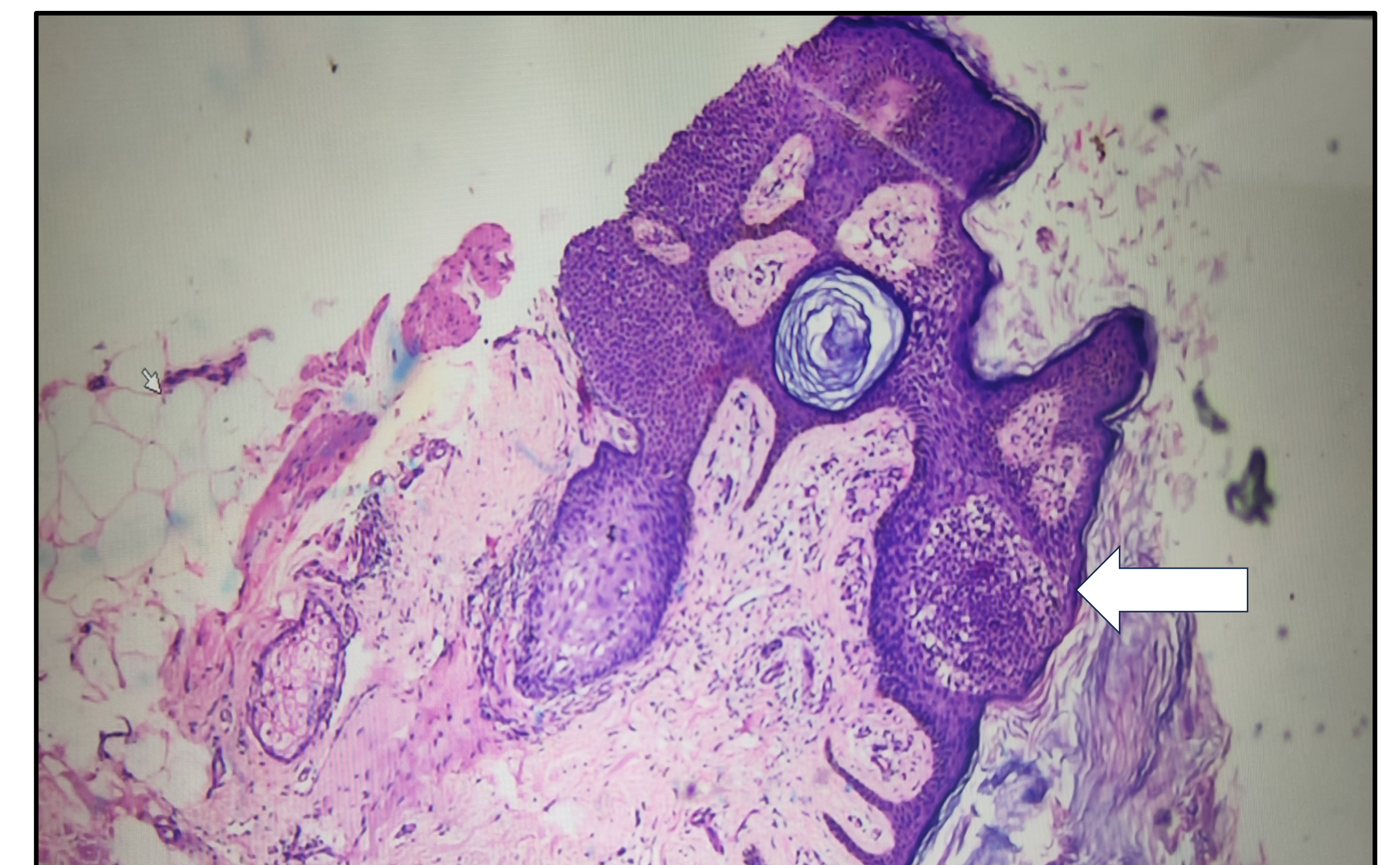


Fig.3

Conclusions

Hidraacanthoma simplex is a rare **poroid adnexal tumor** that often mimics **Bowen’s disease and other tumors**.

Accurate diagnosis relies on **dermoscopy plus histopathology**, preventing **unnecessary aggressive treatment**.

References

- ◉ Liu H-N, Chang Y-T, Chen C-C. Differentiation of hidroacanthoma simplex from clonal seborrheic keratosis. Am J Dermatopathol. 2004;26(3):188-93.